

impact
awards special



ruralcc.org.uk

@YourRCC

#RCCAwards

rural19
achievement awards



Sponsored by Allied Westminister, the principal supporter of ACRE's advice service for Village Halls



Allied Westminster



Village Hall Insurance and the home of VillageGuard



© Allied Westminster (Insurance Services) Ltd

We don't just care for Village Halls, we care about Village Halls

CONTACT US FOR A QUOTATION

Tel: 01937 845245

Web: www.villageguard.com

Email: insurance@alliedwestminster.com

For details and terms of our FREE Property Valuation service, visit www.villagehallsurvey.com

Allied Westminster is the principal supporter of ACRE's advice service for Village Halls

VillageGuard is available exclusively from Allied Westminster (Insurance Services) Ltd
Authorised and regulated by the Financial Conduct Authority (FCA) - Registration Number 308386



As Chairman of the RCC, it gives me great pleasure to welcome you to a special edition of our charity Impact Magazine dedicated to celebrating the Leicestershire & Rutland Rural Achievement Awards for 2019

It has been two years since we successfully launched our awards. We are delighted with the hugely positive impact we have had in creating a platform to raise awareness of the issues faced by rural communities and to recognise the amazing plethora of people, groups and businesses taking positive action to tackle these issues and improve everyday life for people living and working in our rural areas.

Building on the success and popularity of the 2017 and 2018 awards, we are delighted to once again have the opportunity to celebrate the work of community focused organisations and the army of volunteers active across rural areas of Leicestershire and Rutland.

As a charity, the RCC is very proud to host these awards and to be able to promote the impressive amount of time, energy, passion and ingenuity that people put into making our rural communities happier, healthier, safer, vibrant and more connected places to live and work.

On behalf of everyone at the RCC, I would like to thank and congratulate everyone that entered our awards this year. The range and quality of entries we have received this year has been absolutely amazing. Hearing your stories and seeing some of your work first hand has been a privilege and we all very much look forward to being able to celebrate your success at and following our 2019 awards dinner.

Finally, I would like to extend my sincere thanks to our volunteer judges and valued sponsors for their generosity and commitment in helping to make our awards such a successful platform from which to celebrate rural life in our two great counties.

Martin Traynor OBE
RCC Chairman

FORWARD

B AUDIO VISUAL BEST COMMUNITY LIBRARY AWARD

An award for a community run library that has made a significant impact on the community via the facility, services and resources it provides



Glen Hills Community Managed Library and Park Cafe

The Glen Parva based library and café are open 32 hours per week and run entirely by an enthusiastic and committed team of volunteers. The onsite café provides a vital facility for local people to connect and helps to generate income to cover library running expenses.

glenparvaparishcouncil.org.uk/glen-hills-library

Leicester Forest East Community Library

Having celebrated its third anniversary in December 2018, the Library continues to steadily achieve its aim of becoming a HUB for the community by constantly listening and responding to the needs and wants of the local community.

lifelibrary.zohosites.com



Measham and District Community Library

A purpose-built volunteer run library in the heart of the village. In addition to traditional library services the facility also offers a range of other valuable community services to support disadvantaged people in the area including a food bank.

meashamlibrary.btck.co.uk

Sileby Community Library

Run solely by volunteers, the Library is a focal point for the village and provides a valuable community facility and service. Starting in March 2018, the Library has been completely refurbished to provide a more modern environment, facilitate broader use and to create a friendly 'book shop' atmosphere.

silebylibrary.org





PROUD TO SPONSOR **BEST COMMUNITY LIBRARY 2019**

ESTABLISHED FOR OVER 35 YEARS, B AUDIO VISUAL ARE A PROFESSIONAL COMPANY PROVIDING EXPERTISE AND EQUIPMENT FOR LIVE EVENTS

INDOOR LED VIDEO WALL | OUTDOOR LED VIDEO WALL | CURVED LED VIDEO WALL
OUTDOOR STAGE HIRE | AWARD NIGHTS | CONFERENCES | INSTALLATIONS

HIRE@B-AUDIOVISUAL.CO.UK | WWW.B-AUDIOVISUAL.CO.UK | 0116 2751099

FOXPRINT COMMUNITY ENGAGEMENT AWARD

Celebrating excellent approaches to community engagement that raise awareness of rural issues, build local connections or enable people to influence change in their community.



Hathern Together

Set up in 2018, Hathern Together is a community led initiative to bring together clubs, societies and organisations within the village to work together providing and promoting improved facilities, services, activities and events.

hathernonline.co.uk

March of the Fifty Hugglescote & Donington le Heath

To commemorate the centenary of the ending of WW1 fifty-three local men marched from Hugglescote Church to Coalville Train station recreating the march of the first fifty civilian volunteers in the country to land in France in 1914.

facebook.com/marchoffthefifty



Market Bosworth Town Centre Redevelopment Project

Following on from the successful development of a Neighbourhood Plan, the community was engaged in a variety of interactive activities to help develop and agree a comprehensive redesign of the town centre.

marketbosworth-pc.gov.uk

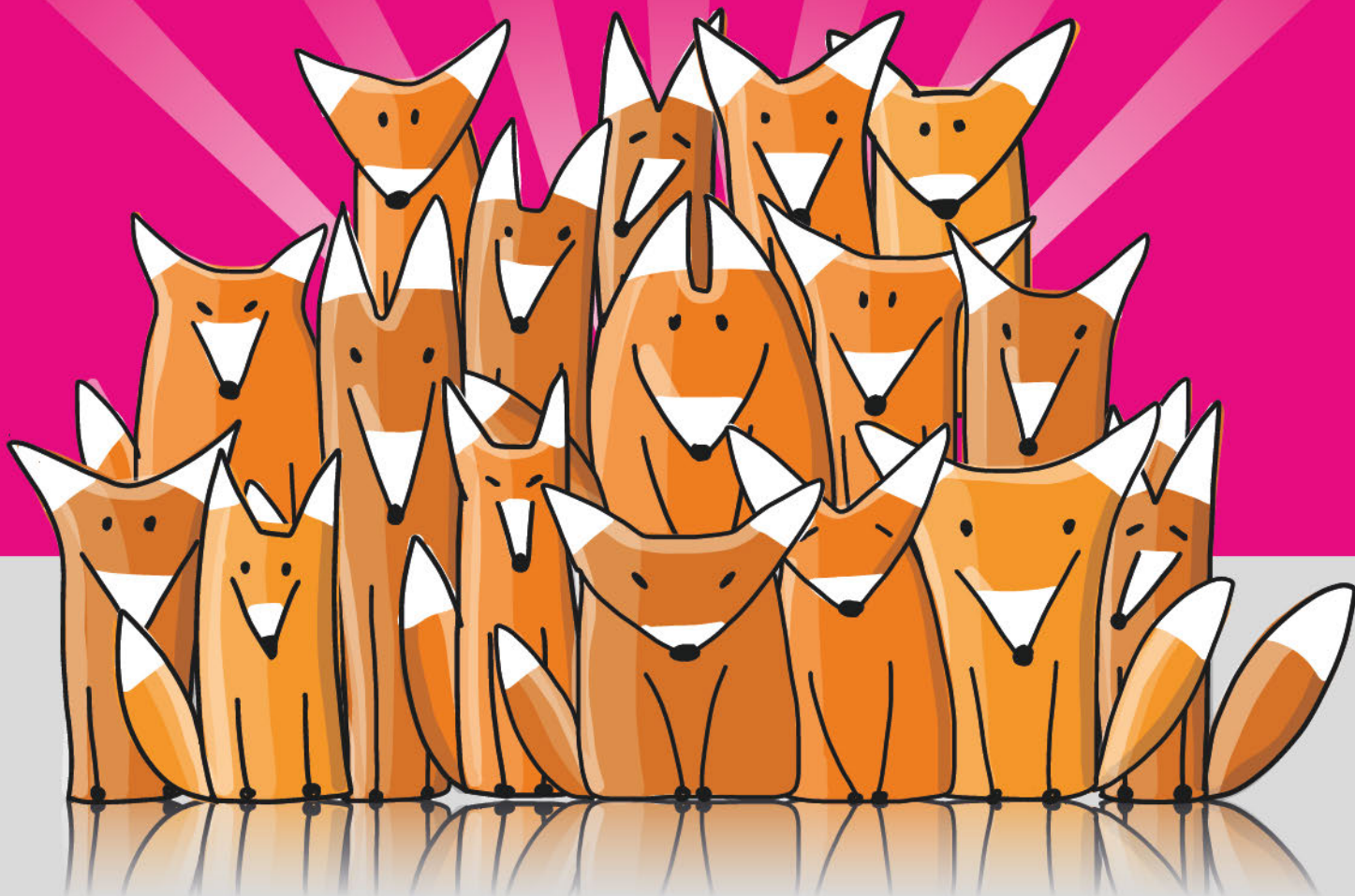
Queniborough Gazette

Delivered to every household by a committed team of volunteers eight times a year, the Queniborough Gazette has made a valuable contribution to community life by bringing people together and sharing news and information across the village for the past 43 years.

queniborough.online/digital-gazette



Proudly sponsoring the Rural Achievement Awards 2019
Community Engagement Award



FOXPRINT

Bring your **print** to life

Brochures & Magazines / Flyers, Leaflets & Menus
Delivery Notes & Invoices / Exhibitions, Banners & Signage
Personalised & Promotional Items / Graphic Design



Foxprint, 1 Factory Street, Shepshed, Loughborough, Leics, LE12 9AQ **Call:** 01509 505413 **email:** print@foxprint.co.uk **web:** www.foxprint.co.uk
Rink Print, Rinkway Business Park, Swadlincote, Derbyshire, DE11 8JL **Call:** 01283 221785 **email:** sales@rinkprint.co.uk **web:** www.rinkprint.co.uk

SOCIAL VALUE ENGINE RURAL SERVICE AWARD

An award for an outstanding, innovative or unique service delivered by the community to benefit people living or working in a rural area of Leicestershire or Rutland.



Market Bosworth CIC Enjoy Market Bosworth Website

The Enjoy Market Bosworth website has been developed with an aim to be 'the single point of information' for the town including a calendar of events and a directory of all businesses, community organisations and groups.

marketbosworth.org

Leicestershire & Rutland PFA Loan Scheme

The loan is marketed as a lender of first resort, rather than of last resort. This means applicants can use the facility as leverage with grant funders or donors for projects which may otherwise not get off the ground.

lrpfa.org.uk



System and District Volunteer Centre Rural Transport Services

Celebrating its 40th year, the Centre provides safe and convenient transport for those in the rural area within and around Syston without a car and that are not able to access public transport.

system-vc.org

Woodhouse & Woodhouse Eaves Good Neighbour Scheme

Delivered by a team of 38 volunteers the scheme reaches out and helps people in the Parish including lifts to appointments or social events, befriending and support with everyday tasks.

woodhousegns.org.uk





SOCIAL VALUE ENGINE

Social Value is all about the outcomes achieved by an initiative.

Measuring the tangible costs and outputs of an activity is straightforward; the greater challenge is giving a value to the benefits it provides. It's even harder to do this in the context of place. That's what our Social Value Engine is all about.

The Social Value Engine provides:

A systemised and academically robust assessment of social value for you to forecast, plan and evaluate your activities

A description of how a project creates value, and a ratio that states how much social value (in £/€) is created for every £/€ of investment

More than 100 peer-reviewed financial proxies derived from reliable sources

It helps you think about how your activities are making a place better to live in (sustainable communities)

If you would like to learn more about how the Social Value Engine does this, then visit socialvalueengine.com or email us at socialvalueengine@eastriding.gov.uk

Identifying the signs of suicide...

Look for changes in **BEHAVIOUR**, such as isolating those around them, **MOOD**, maybe a loss of interest in what they would normally enjoy doing, or **TALKING ABOUT** feeling hopeless or trapped

#StartAConversation

**START A
CONVERSATION**

SUICIDE
is preventable

StartAConversation.co.uk



rural matters

our charity strategy

ruralcc.org.uk

   @YourRCC

Why rural matters

Rural Leicestershire and Rutland are often thought of as idyllic and privileged places nestled in the heart of the English countryside. Whilst for most this perception is a fortunate reality, there are many people and places hidden across our counties facing significant issues and disadvantage as result of their rurality.

As a charity, we believe that by simply being in a rural location no person, organisation or business should be disadvantaged and that facilities, services and other opportunities should be made equally accessible wherever and however possible.

We must be realistic and understand that rural provision can sometimes be disproportionately costly, time intensive or logistically challenging.

Rural disadvantage...

- Limited employment opportunities and prevalence of lower paid jobs
- Poor access to public transport, broadband and other services
- Lack of affordable housing and a higher cost of living
- Loss or deterioration of community facilities and public spaces
- Increased risk of loneliness due to geographic and social isolation
- Lower per capita expenditure on health and social care

Challenges however should not form justification for inequality or bias. Innovation and creative thinking can often overcome any challenge, especially if you engage with the people that you are aiming to support. This is where our charity has a key role to play.

The ethos underpinning our work is clear. By bringing people together and supporting them to raise awareness of and tackle the issues impacting their area we will help to make rural communities across Leicestershire and Rutland happier, healthier, stronger, and more accessible places to live and work.



Our vision

Our purpose

We will create a network of...

Strong and connected rural communities that support each other and maximise the opportunities, assets and resources available to them.

We are here to...

Deliver a range of quality services to create, develop, support and represent strong, inclusive and forward thinking rural communities.

Our values

Connected

We listen, are an advocate for others and have a strong, clear and influential voice.

Ambitious

We push ourselves to grow and improve by being bold and embracing innovative ideas.

Responsible

We lead and inspire others, share ownership and work with honesty and integrity.

Efficient

We make the best of all assets and resources by being flexible, smart and creative.



We have four

Rural people

We will improve the lives of people disadvantaged by living in a rural area by improving their wellbeing and economic prosperity and supporting them to be more active in their local community

Our work will be focused on

- Reducing loneliness and isolation
- Suicide awareness and prevention
- Boosting employment and reducing the cost of rural living
- Improving wellbeing through positive community led action



Rural policy

We will increase our representation and awareness raising activity to better influence the development and implementation of local and national policies that impact our rural areas

Our work will be focused on

- Representing rural communities with key policy and decision makers
- Increasing awareness of issues prevalent in rural areas
- Campaigning for better investment into our rural communities



clear aims

Rural place

We will make rural areas more diverse, accessible and vibrant places by supporting better community led planning and helping to improve spaces where people meet and access services

Our work will be focused on

- Enhancing village halls, community buildings, open spaces and outdoor recreation facilities
- Supporting neighbourhood and community led planning
- Helping to strengthen and grow the rural economy



Rural profile

We will raise the profile of our charity and the rural issues we work to tackle and provide a platform to promote people and organisations that positively impact our rural areas

Our work will be focused on

- Growing our awards to celebrate and promote more rural champions
- Building a visible, clear, strong and representative brand for rural areas
- PR activity to raise awareness of rural issues and the impact of our work



The RCC is needed more than ever



over 9 million

people in the UK feel that they are often or always lonely¹

124 areas

of Leicestershire & Rutland where older people are at high risk of loneliness²

over

250 village halls

make up the largest network of community facilities in rural Leicestershire & Rutland



over 60% of rural parishes

in Leicestershire & Rutland not actively engaged in neighbourhood or community led planning³



376 people

have died by suicide in Leicester, Leicestershire and Rutland over the last five years⁴

1 - British Red Cross (2019) 2 - Age UK loneliness maps 2016 (<http://data.ageuk.org.uk/loneliness-maps/england-2016/>)
3 - Active and made neighbourhood plans listed on Leicestershirecommunities.org.uk and rutland.gov.uk (September 2019)
4 - Office for National Statistics - Suicides in the UK: 2018 registrations (September 2019)



Rural Community Council (Leicestershire & Rutland)
Unit S09, The Atkins, Lower Bond St, Hinckley, LE10 1QU

Tel: 01455 856330 Email: info@ruralcc.org.uk Web: ruralcc.org.uk

   @YourRCC

Registered Charity: 1077645 Company Limited by Guarantee: 3665974



Work. Live. Leicestershire

TACKLING RURAL
UNEMPLOYMENT

We could offer you free, tailored support if you're looking for volunteering, work, business start up advice or improved wellbeing

 Call 01455 856330
 Email hello@ruralcc.org.uk



This project is funded by the European Social Fund and the National Lottery Community Fund

*Participants must meet all eligibility criteria to be considered for entry onto the programme

NFU MUTUAL MARKET HARBOROUGH RURAL BUSINESS AWARD

Celebrating businesses that positively engage the community, that help to tackle rural issues, build local connections or bring benefits to people within the community they serve.



Access Generation CIC

A social enterprise which aims to encourage businesses to employ inexperienced young people and empower young people and business to make work more accessible.

accessgeneration.co.uk

Farmer Barnes Dairy

A proud working British Dairy Farm in Somerby that has installed a unique 'Cow Classroom' next to the milking parlour where people are invited in to find out about milk production.

farmerbarnesdairy.com



Root & Branch Out CIC

A Rutland based community interest company set up to engage communities in projects around food and the outdoors, nature and the environment.

rootandbranchout.co.uk

The Geese and Fountain

Re-opened by new owners and with a new name, The Geese and Fountain is a traditional inn in the village of Croxton Kerrial committed to local brewers, local food producers and providing a range of community services.

thegeeseandfountain.co.uk



Thrussington Village Store

A family run independent village shop with a deli and tearoom in the beautiful Leicestershire village of Thrussington.

facebook.com/ThrussingtonsVillageStore

INSURANCE THAT'S ON YOUR DOORSTEP

Having a local office means we are accessible, whether you need to make changes to your policy or make a claim.

We can help you insure your:

- Home & Car
- Horse & Horse box
- Business
- LGV & Commercial Vehicle

For a real conversation about your insurance

Give us a call or pop in

The Symington Building, Adam and Eve Street, Market Harborough, Leicestershire
LE16 7LT

01858 462878



NFU Mutual

INSURANCE | PENSIONS | INVESTMENTS

STARS AWARDS

CHARITY BANK BEST COMMUNITY FACILITY AWARD

An award to recognise a community facility that brings outstanding benefits to the local community and is developed or managed through innovative and creative thinking.



All Saints Church Sheepy Magna

The community in Sheepy has transformed its church from a tired, cold and poorly lit building into a light, warm, welcoming, flexible and inspiring space, accessible for all.

sheepybenefice.org



Markfield Community Centre and Community Park

The recently refurbished community and sports centre is based within a comprehensively redeveloped community park. The combined facility provides fantastic modern indoor and outdoor recreation space for the community and has revitalised what had previously been a substantially mundane and under used site.

markfieldcommunitycentre.com

The Friendly Bench™ Bottesford & Newbold Verdon

The Friendly Bench is an innovative kerbside community space designed specifically to help combat loneliness by providing a friendly informal space for people to meet, chat and strengthen their social networks.

thefriendlybench.co.uk



©The Friendly Bench™ 2019

Loans and savings to support rural communities

Charity Bank exists to lend its savers' money to charities, and social and community enterprises that are working to make the world around them a better place.

Many of these organisations operate in rural communities: from community shops, to sports facilities and other vital rural services.

With over 25 years' experience and a team of regional managers committed to helping you with access to loans and support, we're well placed to help.

If your organisation is looking for a loan, or a new home for your savings, that earns you a competitive return while supporting rural communities, visit: charitybank.org or call 01732 441919.

Charity
bank
a bank for good

STARS ALIVE

SMALLMAN & SON UNSUNG HERO AWARD

An award made to an individual that has made a significant contribution to their community or that goes the extra mile to help and support others.



**Glynn Cartwright
Melton Mowbray**

Glynn is a proud, passionate man who loves his community and inspires people into acting to improve the cleanliness and environment of Melton Mowbray.

**Joyce Bird
Ketton**

Joyce has made a significant impact on village life in Ketton. She has given an enormous amount of her time and effort, in a most unselfish way, to the village and community including spending many years as a local Guide Leader.



**Mick Utting and Joe Chandler
Lutterworth**

Described as 'real grafters' and 'local legends', Mick and Joe volunteer tirelessly to support almost every community event held in the town of Lutterworth.

**Tracy Steward
South Luffenham**

Tracy has run the Chater Community Choir for 7 years which along with the myriad of other activities she supports has a hugely positive impact on her local community.





smallman & son

commercial building contractors

Smallman & Son Limited is an established Leicester based construction and refurbishment company built on the promise of outstanding quality and professionalism.

- Offices, Restaurant & Bars
- Sport & Leisure Facilities
- Churches
- Universities, Schools & Colleges
- Hospitals & Medical Centres
- Prisons
- Factories & Warehouses
- Retail Outlets & Shop Fitting
- Bespoke Joinery



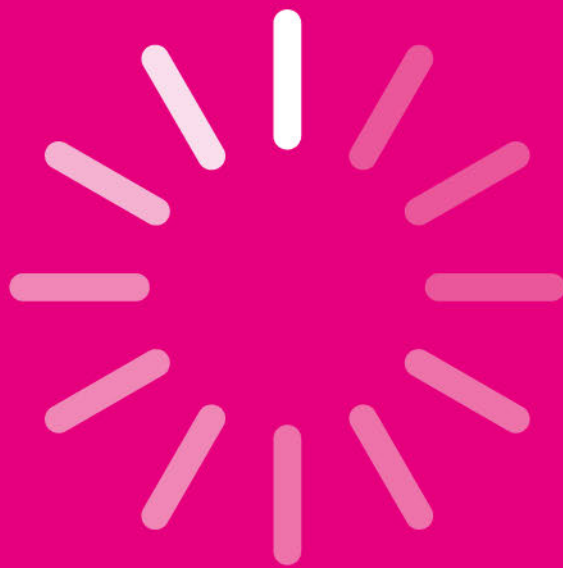
Contact us on:

0116 276 4288

danielle@smallmanandson.co.uk

www.smallmanandson.co.uk

Tired of waiting?



**Don't let buffering hold back your business, 96%
of Leicestershire can upgrade to fibre broadband**

Check if you can

www.superfastleicestershire.org.uk/upgrade

Superfast Leicestershire is supported by



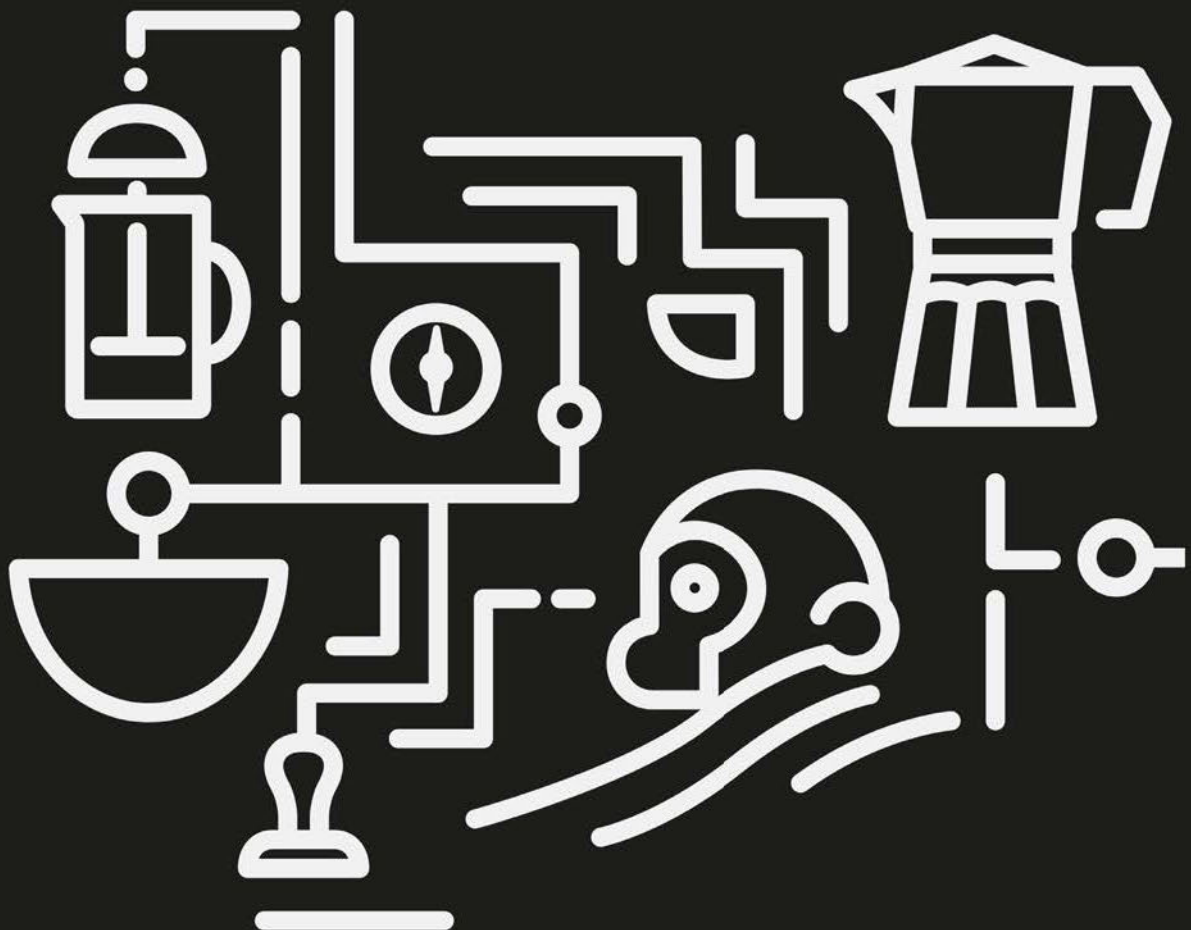
rural coffee
connect

connecting people one cup at a time

WILL PROUDLY BE SERVING

two
chimps

Awesome coffee. No nonsense



membership

Supporting our charity



rcc

We rely on your support to continue our work to benefit the lives of rural people and improve rural places across Leicestershire and Rutland

Membership of the RCC is open to any individual, organisation or group based within or wishing to support rural Leicestershire and Rutland.

Our members help to govern our charity, shape our services and increase our impact and reach across rural communities

ruralcc.org.uk/join

by joining as a member for

£60 PER
YEAR

together we can...

PREVENT **SUICIDE** INCREASE **RESILIENCE**

COMBAT **LONELINESS**

SUPPORT **VILLAGE HALLS** IMPROVE **CONNECTIVITY**

BUILD STRONGER **RURAL COMMUNITIES**



MAKING PLANNING WORK FOR ALL RURAL COMMUNITIES

We offer a broad range of community consultation and technical support services which can help you work with people across your community to plan the future of your area, have greater influence over the way your village or town develops and grows, identify and explore local issues and priorities or gather evidence of need to support project development and fund raising activity



[**www.ruralcc.org.uk**](http://www.ruralcc.org.uk)



launching 1.11.19

ruralcc.org.uk/awards

#rural20